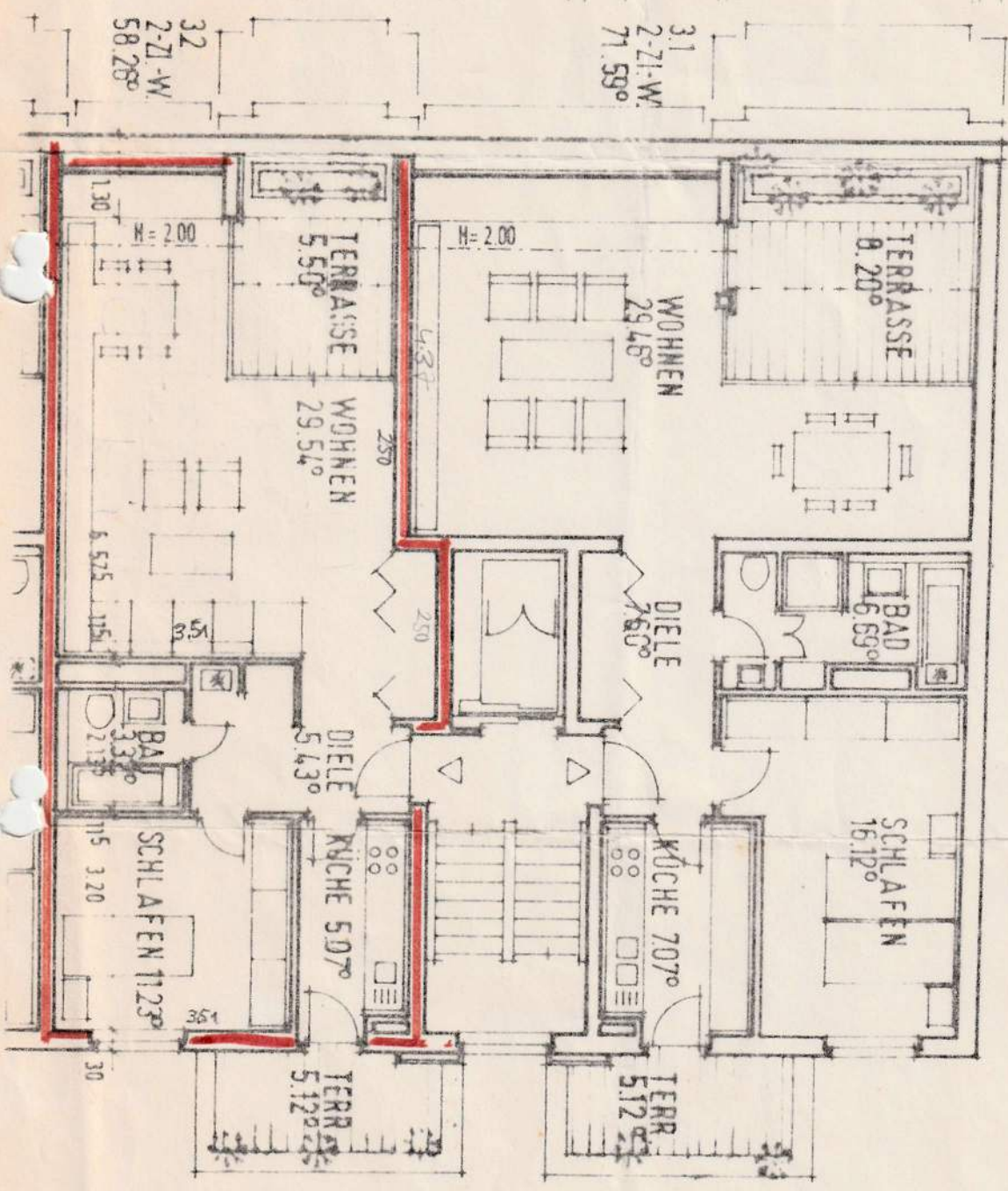


27.95.5

24 5.01 24 4.51 24 3.54.5 9 30
 24 1.88.5 11.5 1.51 11.5 1.38.5 6.25 24 1.63.5 24 6.25 1.38.5 11.5 3.67



1.30
 1.00 30 1.01 24 1.06.5 2.38.5 24 2.01 2.51 1.15 5.07.5 1.26 1.15 3.20
 1.30 1.81
 12.44

24 1.26 3.51 11.5 89 1.63.5 24 1.26.5 2.38.5 24 89 2.26 11.5 2.91.5 1.26 9
 1.37 1.38.5 1.86 2.26 1.48.5 1.38.5 1.48.5 2.26 1.86 1.38.5 59.5 30